

## The Green Man Gallery – Venue 86

### Venue Information for Buxton Festival Fringe 2023

The Green Man is an independent gallery and arts centre housed in a large Victorian building behind Buxton Museum, easy to find thanks to its central location. It is managed and run on a voluntary basis by local artists and community volunteers and is popular with locals and visitors alike. There is limited free off-road parking space at the gallery with pay and display car parks and roadside parking nearby.

The Green Man is a managed performance venue which gives a friendly welcome and excellent support to performers and companies bringing shows to the Fringe. In previous years The Green Man has hosted jazz, folk and classical music; stand-up comedy; small-scale theatre; poetry, cabaret, children's shows and workshops during the Fringe. We handle all of your ticket sales, assist with promotion of your event and provide front of house staff. (See page 4 for details of the services we offer.)

Most performances during the Fringe have running times of 60 minutes or less however can also host a limited number of full-length shows with an interval. We try to work on a first-come, first-served basis and aim allocate your date(s) and time slots as soon as you contact us.

**Demand for performance slots at the gallery is always very high and we are usually fully booked well before the end of February.**

#### **Venue 86a: Ground Floor Gallery**

The ground floor of The Green Man was originally a ballroom. It has superb, large room acoustics in the context of an intimate and friendly small venue. The gallery is used as a performance venue throughout the year and is very popular with touring musicians. We also host small-scale theatre and spoken word performances. The acoustics are particularly good for folk, acoustic, jazz and classical music and there is a baby grand piano which can be used for a small extra fee.

**Stage:** There is a small corner stage with a curved front edge. There are no wings and no backstage area.



*The corner stage (with the gallery's fixed lighting)*



*Performance on stage (company's own lighting and drapes)*

#### **Seating capacity**

Maximum 60 with chairs on rows or 45 at café tables. It is also possible to have a combination of rows and tables. The rest of the room is taken up by fixed display screens exhibiting art work but it may be possible to use the exhibition spaces flexibly for some performances. (Floor plan on page 4.)

#### **Availability**

The ground floor is only available outside gallery opening hours between 5.30pm and 10.30pm.

#### **Accessibility**

The whole of the ground floor (but not the stage) is accessible to wheelchairs.

#### **Hire charges**

**£30** for shows up to one hour or **£50** for full length (e.g. 2 hour) show with interval.

Reasonable get in/get out times. A discounts of £5 per performances is offered for bookings of 2 or more performance slots.

## Evening performance slots

**Shows 60 minutes or less:** Slot 1 starts at 6.30pm (Doors open 6.15pm. Get-in 5.30pm). Slot 2 starts at 8.30pm. (Doors open 8.15pm. Get-in 7.45pm). We can sometimes be flexible depending on the get-in and get-out times required.

**Full length shows:** Start between 6.30 and 8.00pm. Finish no later than 10pm.

## Technical information

Please note, **this is a multi-purpose space, not a theatre**. There is no integrated sound system or lighting rig and no blackout. Performers are welcome to bring their own sound and lighting equipment which must be PAT tested. All lighting must be free-standing. Please discuss at the time of booking.

The Ground Floor Gallery is open to the public during the day for the viewing of exhibitions. We cannot leave sets or technical equipment in place. Please plan for setting up and striking everything before and after each performance. We may be able to store your set/props/tech. equipment between shows. Please discuss this in good time.

## Get-in and Get-out times

These will be confirmed at the time of booking and must be adhered to. For shows of 60 minutes or less, you can expect to have at least 30 minutes to get in and 15 minutes to get out (all equipment & set off the stage).

For longer shows, timings are more relaxed as we can only fit in one full-length show per night.



*Skutch Manos performing on the ground floor stage.  
(Band's own lighting combined with gallery's fixed lights.)  
This performance took place in winter. We do not have blackout facilities.*

## **Venue 86b: Workshop Room**

A large, light bay windowed room up one flight of stairs on the mezzanine floor. (No lift.) The room is a flexible 'empty space' with good acoustics thanks to its high ceiling and vinyl flooring.

Suitable for storytelling and other spoken word performances; children's events; very small scale theatre such as one-person shows; small-scale musical performances; workshops and classes; rehearsals. (Floor plan on page 5.)



*The Workshop Room. NB Flooring has been replaced. Now light grey vinyl.*

**Seating capacity:** Up to 25. The room can be set out in various ways. We can fit in 25 chairs for end-on or traverse layouts. Other layouts may reduce the audience size.

**Availability:** Can be used for performances during the day and in the evening.

**Accessibility:** The Workshop Room is on our mezzanine floor and is reached by one flight of stairs. (No lift.)

**Time slots for performances:** 12pm to 1pm; 2pm to 3pm; 6pm to 7pm; 8pm to 9pm. Longer shows can sometimes be accommodated. Please ask.

NB This room is used regularly for classes and workshops and rehearsals but there are always plenty of slots available during the Fringe.

**Hire charges:** £30 for shows up to one hour with discounts for block bookings (as for Ground Floor Gallery). £15 per hour for workshops. £10 per hour for rehearsals.



*One man show in the Workshop Room*



*Debbie Cannon performs 'Green Knight' in the Workshop Room* 3

## What will the Green Man Gallery do for you?

We will:

- **Handle all your ticket sales for no extra charge.** We will sell your tickets at the counter or by phone (card payment taken) on 01298 937375, and online via WeGotTickets.  
**You must make the gallery your exclusive Box Office when you register your event on the Fringe website. There is no need to place tickets with Buxton Opera House or to sell them yourself. (This is crucial to avoid over-booking.)**
  
- Ensure that you have access to the gallery at the time(s) arranged.
- Ensure the space you have hired is ready for you to use.
- Provide front of house services (one or two members of staff, depending on the nature of your event).
- Provide refreshments for the audience in return for donations (Ground Floor shows only).
  
- Publicise your event in the following ways:
  - On our website
  - In regular email bulletins to our mailing list (currently 1,300+)
  - In the What's On leaflet available in the gallery and Buxton Visitor Centre
  - At gallery events
  - On our social media: Facebook (currently 3,000+ followers) and other appropriate FB pages and groups; Instagram
  - In Pure Peak magazine
  - By creating a poster if requested\*
  - By displaying posters and flyers inside and outside the gallery. Further poster/flyer distribution is up to you.

\*Posters can be designed by The Green Man Gallery. You will need to provide an image as a jpeg and clear, concise information about the event.

OR

\*You are welcome to design your own poster. **The design must include The Green Man logo, the Buxton Fringe logo and the gallery's address and phone number.** (We will email the logo and other details to you.)

**It is very important for you to publicise your event as widely as possible and to allow sufficient lead-in time to do this. (We suggest a minimum of 6 weeks although longer would be preferable.)**

**The gallery is run by volunteers and does not have a large marketing budget.**

We look forward to welcoming you to The Green Man Gallery and to hosting your event.

For all enquiries about bringing a show to The Green Man, email the Events Manager, Caroline Small  
[hello@thegreenmangallery.com](mailto:hello@thegreenmangallery.com)

***Like everyone else at The Green Man, Caroline works on a voluntary basis and is not on duty at the gallery every day. You may not reach her if you phone the gallery and other members of staff will not be able to answer detailed questions about Fringe bookings. Once you have made a firm booking, Caroline will give you her mobile number.***

The Green Man Gallery  
Hardwick Studios  
Hardwick Square South  
Buxton SK17 6PY

[www.thegreenmangallery.com](http://www.thegreenmangallery.com)

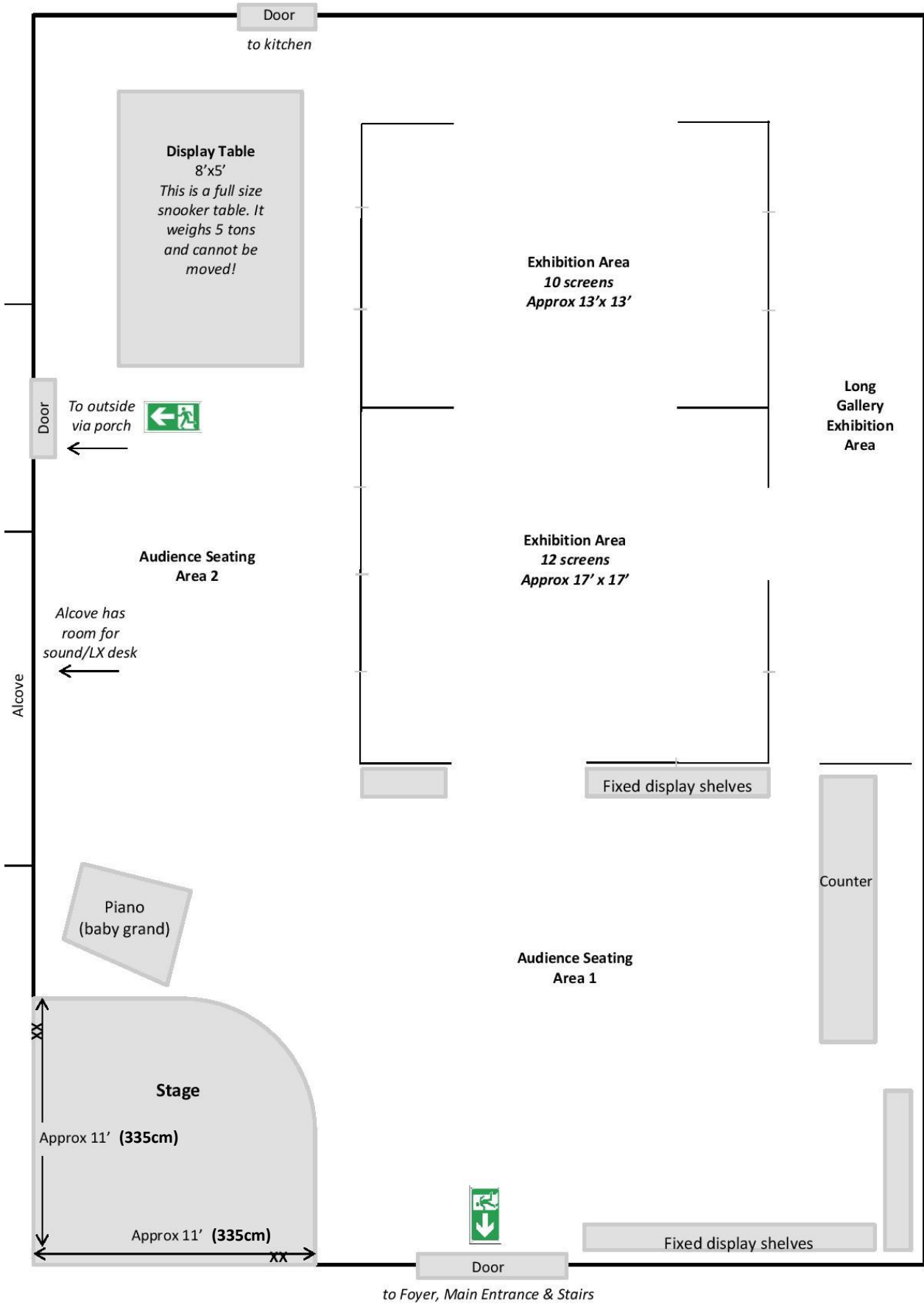
[Facebook: TheGreenManGallery](https://www.facebook.com/TheGreenManGallery)

[Instagram: @thegreenmangallerybuxton](https://www.instagram.com/thegreenmangallerybuxton)



# The Green Man Gallery Ballroom (ground floor)

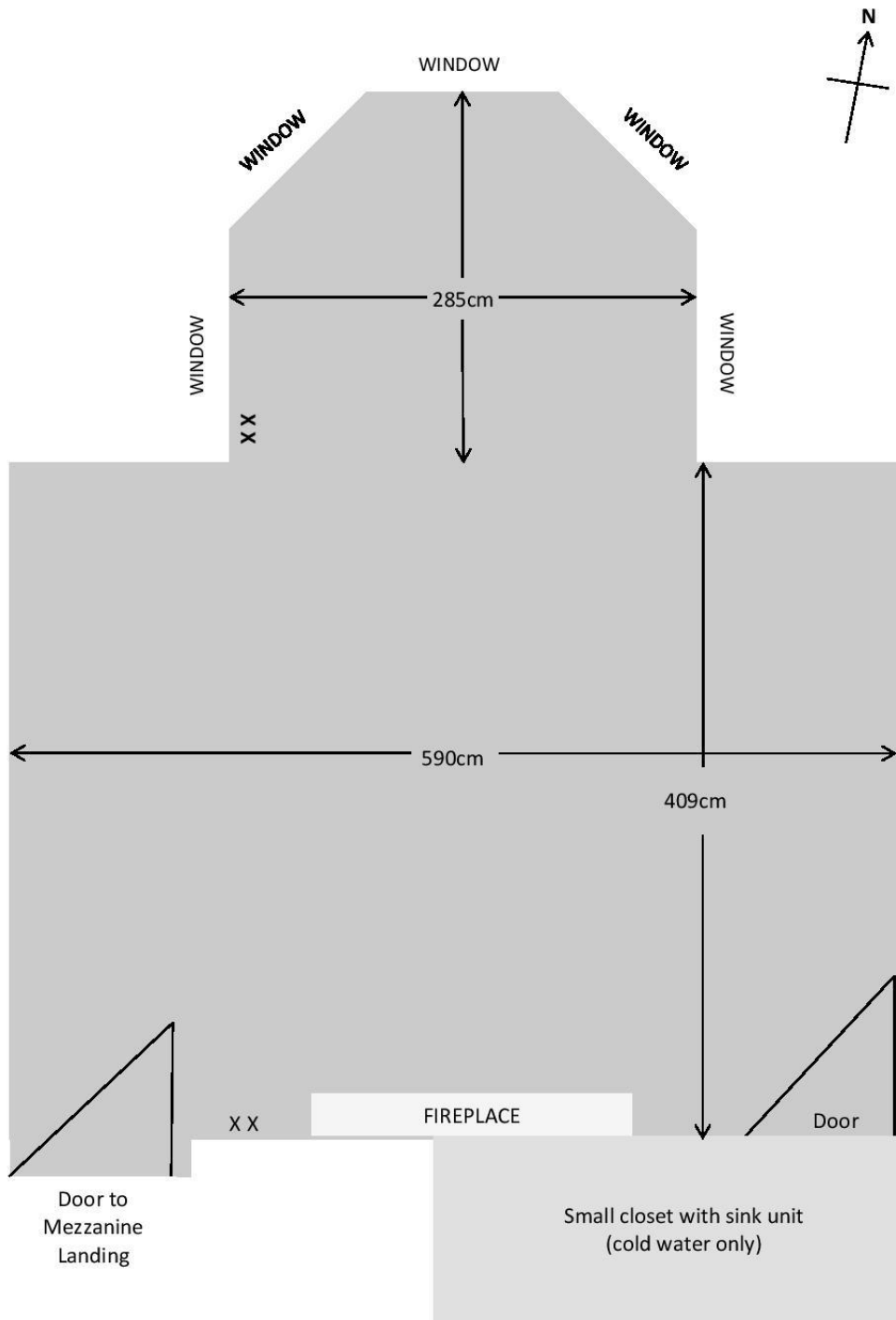
Not to scale



**NB** The piano cannot be moved but does not generally cause problems with sightlines as the stage is fairly high.

# The Green Man Gallery Workshop Room (mezzanine floor)

*Not to scale*



**X X = double electrical socket**